

Sikkim Express 07/09/22

Landslides, flash floods wreak havoc in West Sikkim

KUSHHANGLEEWANG

GEYZING, September 6: Landslides and flash-floods triggered by incessant rain damaged houses and disrupted road connectivity in different parts of West Sikkim today.

The Legship-Jorethang highway connecting Geyzing and other urban areas remained closed at multiple points throughout the day. The Geyzing-Legship road which was blocked at Raniban since Monday night was made trafficable by the concerned department later in the day.

Another massive landslide near Green Valley School at Langang has blocked Lingchom-Dentam route since Tuesday morning. However, the route via Tikjek which also connects Lingchom with Dentam was open for traffic.

Soreng district witnessed physical damages to houses with a massive landslide reported from Upper Hathidhunga ward of Rinchenpong constituency. One house was completely damaged and another house suffered partial damages in the landslide. The affected family had to be evacuated to a safer location.

Elsewhere, a flash flood damaged a house in Berthang Rugdu ward under Geyzing-Bermiok constituency, with the residents needing evacuation.



In Gyalshing district, day long inspections were conducted by district authorities. Blocked roads and jhoras was cleared immediately and all affected households were provided with tarpaulins and poly pipes as instant relief measures with an assurance to provide further assistance as required, informs an IPR release.

The inspecting teams that visited the affected locations were Gyalshing ADC,

Gyalshing SDM, SDM HQ, PMGSY SE and team, DDMA DPO, quick relief team and officials of Forest and Roads & Bridges departments.

Following a visit to the affected spots, the district collector convened a meeting with NHIDCL officials for immediate restoration whereby they have proposed to construct plum wall/Gabbion wall to retain the existing road in the next seven days, the IPR release adds.

DC inspects rainfall damage in Gyalshing district



GYALSHING, 06 SEPT [IPR]: Torrential rainfall that hit Gyalshing district on the night of 05 September caused landslides / mudslides at many locations and damaged houses, roads and property.

The badly affected areas are Naya Basti, Tikjuk, St. Mary's School, DIET College, Bhanu Salig area, Yangthang, Lower Tikjyak, Yangtey, Upper Singyang, Berthang, Miyong and Bhaluthang village.

A series of daylong inspections was conducted by district authorities led by the District Collector, clearance of blocked roads and jhoras was executed immediately and all affected households were provided with tarpaulins and poly-pipes as instant relief measures with an assurance to provide further assistance as required.

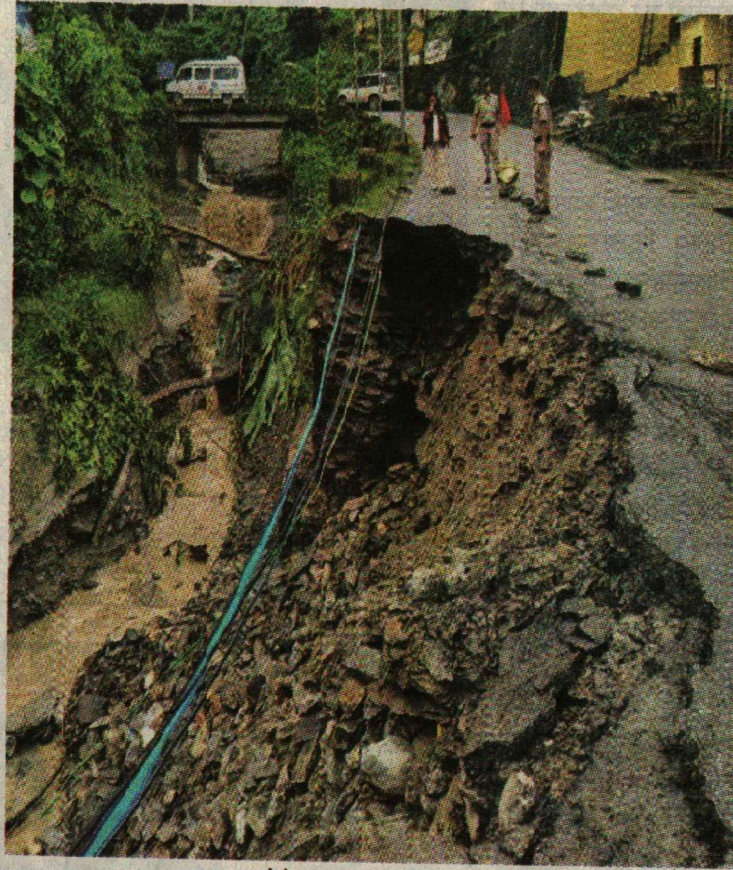
The inspecting teams that visited the affected locations were ADC, Gyalshing, SDM Gyalshing, SDM HQ, SE(PMGSY) & team, DPO(DDMA) with the Quick Relief Team and officials of For-

est and Roads and Bridges Department.

Further, massive damages that occurred on the Legship-Gyalshing road leading to caving in/ washing out of a portion of the main road above Legship bazaar, and two other locations where slab and existing culvert beams were damaged by shooting boulders at 8th Mile and the Hume Pipe Culvert on the existing road has choked due to the debris coming from upstream. All heavy vehicles have been stopped from Pkyong beyond Legship towards Gyalshing until vulnerable points are restored to safety.

Following a visit to the affected spots, DC Gyalshing convened a meeting with NHIDCL officials for immediate restoration whereby they have proposed to construct plumb wall/ Gabbion wall to retain the existing road in the next seven days and also new RCC Girder beam is to be re-cast along with the top slab at the damaged culvert site. Further, Hume-pipe culvert of suitable cross section is proposed.

भारी वर्षाले गेजिङ र सोरेङ जिल्लामा व्यापक क्षति



गेजिङ, ६ सितम्बर। गए राती विभिन्न स्थानमा व्यापक क्षति परेको भारी वर्षाले गेजिङ जिल्लाका मार्गबीच ओमचुङ चार माइल रानी खोला उल्लिंदा सडक मार्ग बाधित

बन्यो। अर्कातिर, रानीबनमा पनि खोलाले सडक भत्काएर तहसनहस बनायो। रातीदेखि सडक मार्ग अवरुद्ध हुँदा आवतजावत पूर्णरूपले ठप्प भयो। बिहान पाठशाला जाने शिक्षक-शिक्षिकागण र विद्यार्थीवर्गले धेरै समस्या झेलनुपरेको। अपरान्ह दुवैतर्फको मार्ग साना वाहनको निम्ति खोलियो।

यसरी नै लिङचोम-गेजिङ सडक मार्ग तिव्जेकमा ठूलो पैठो जाँदा बन्द भयो। गेजिङ जिल्लालाई जोड्ने विभिन्न सडक मार्ग अवरुद्ध हुनका साथै यस जिल्लाका विभिन्न

गाउँहरू पैठोको चपेटमा परे। यसरी नै दार्क पानीले गेजिङ-बर्मोक समष्टि अन्तर्गत रूङदु निवानी नरपति शर्माको कच्चा घरमा माथिल्लो पटिबाट आएबो लेदोसारीको माटो पसेको छ। आज बिहान गेजिङ वरपरसहित विभिन्न गाउँलाई जोड्ने सडक मार्ग खेर, अल्लैची बारी, मकैबारी, सबै क्षते गरेको जानकारी प्राप्त भएको छ।

पैठोका कारण आज गेजिङबाट सिलगडी, गान्तोक, दार्जीलिङ, कालेबुङ, जेथाङ लगायत अन्य स्थानमा जाने सवारीसाधनहरू अचल रहे। पैठोबाट ज्यानमालको गोक्सान नभए पनि अन्न बाली, सडक, पुल आदिलाई व्यापक क्षति पुऱ्याएको छ। सोरेङ जिल्लाको रिद्येबुङ समष्टिको अपर हातीदुङगा गाउँमा

पैठोका कारण दुईवटा घर क्षतिग्रस्त भएको जानकारी छ। यस गाउँका कृष्णकुमार तामाङ र लाक्पा तामाङको घरलाई क्षति भएको कारण पीडित परिवारलाई सुरक्षित स्थानमा सारिएको बताइएको छ। घटनास्थलमा क्षेत्र प्रभारी फुर्वा छिरिङ भोटिया, स्थानीय पञ्चायतद्वारा निरक्षण गर्दै प्रभावित स्थानको जायजा लिइयो।